

USL 06 LED Projector

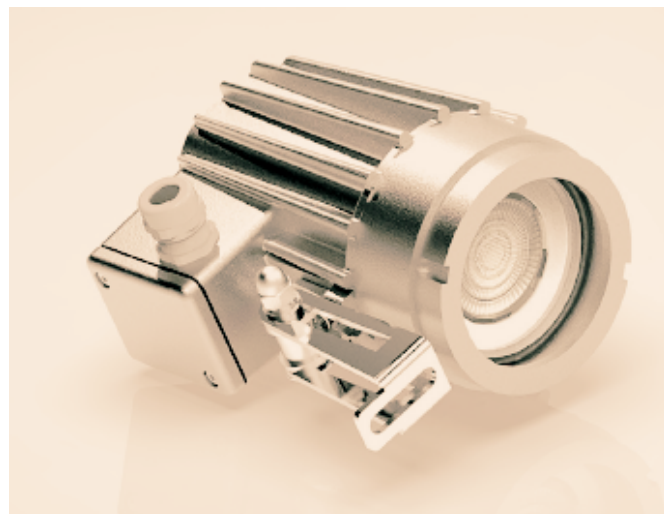
Application:

This highly versatile Lumistar variant, resistant to dust and water jets, has been specifically designed for application in industrial environments.

It is perfect for providing optimal illumination in enclosed tanks, boilers, reservoirs, silos, agitators, and reactors.

The Lumistar USL 06-LED luminaire is optimally designed for integrating viewing and lighting glazing (1-flange version) and for independent installation (2-flange version).

It is compatible with circular glazing connectors in accordance with DIN 28120/DIN 28121 or similar standards, as well as with screw-in glazing connectors akin to DIN 11851.



OPERATING VARIANTS:

- Continuous operation and push-button mode
- External push button and timer sold separately.

SIZE:

- Total length: 167 mm
- Diameter: 110 millimeters

PROTECTION CLASS:

- IP 65 and 67 in accordance with EN 60 529/DIN VDE 0470 Part 1

TECHNICAL SPECIFICATIONS:

- Power supply voltage: 24 V AC/DC, 220-240 V AC
- Ambient temperature: -20°C to +50°C

MECHANICAL SPECIFICATIONS:

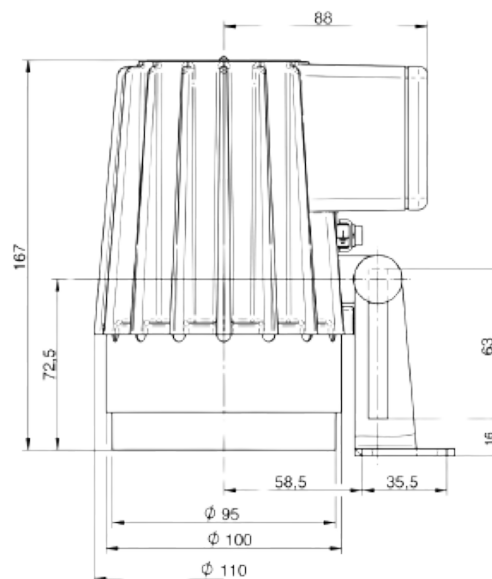
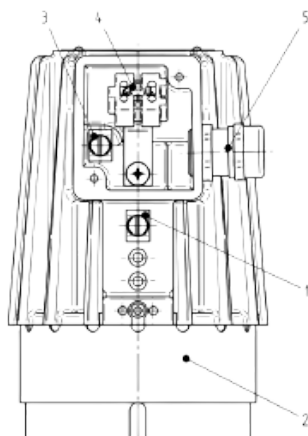
- Luminaire enclosure: Aluminum
- Light fixture head: Aluminum
- Mounting components: Mounting bracket or adapter flange constructed from stainless steel 1.4301.

LIGHTING TECHNICAL SPECIFICATIONS:

- Light hue:
 - 24 V: 6500 K
 - 220-240 V: 4000 K
- Luminous flux:
 - 24 V: 450-500 lumens
 - 220-240 V: 400 lumens
- Beam angle: 12°, 25°, or 38°

	Voltage	Watts	Flux	Angle °	Color
USL 06	24 V AC/DC	14 In	450-500 lm	12°	6500 K
	24 V AC/DC	14 In	450-500 lm	25°	6500 K
	24 V AC/DC	14 In	450-500 lm	38°	6500 K
	220-240 volts alternating current	7 In	400 lm	25°	4000 K

<https://www.gallet-fr.com>



Materials

- Luminaire chassis: Aluminum
- Glass: Borosilicate
- Mounting components: Stainless steel
- Connection box flat gasket: Viton

FIXATION:

Mounting is accomplished through a mounting bracket or adapter flange.

ELECTRICAL CONNECTION:

- Cable gland located on the right
- Variable cable length
- Cable gland clamping range: 6-13 mm

NOMINAL DIMENSIONS:

- For circular glazing connections analogous to DIN 28120: securing on the cover flange from DN 50.
- For circular glazing connections analogous to DIN 28121: securing on the cover flange from DN 80.
- For screw-in glazing fittings analogous to DIN 11851: installation on the cover nut.
 - DN 65, 80, 100: through adapter flange
 - DN 80, 100, 125, 150: through mounting bracket

WEIGHT:

2.1 kg, including the connection box

Supplementary equipment

- Repairing the luminaire, stainless steel mounting bracket: Ref. 0354.016.00
- Fixture mounting, stainless steel adapter flange: Ref. 1356.015.00
- Assembly key for screw-in glazing: Ref. 6805.001.00

Examples of order specifications:

- Ref. 3542.270.00: Lumistar USL 06LED luminaire, 24 V AC/DC, 14 W
- Ref. 1356.015.00: Luminaire adapter plate